

Detector of MIREL SHP System Rail Line Electromagnets

Type **SHPA**

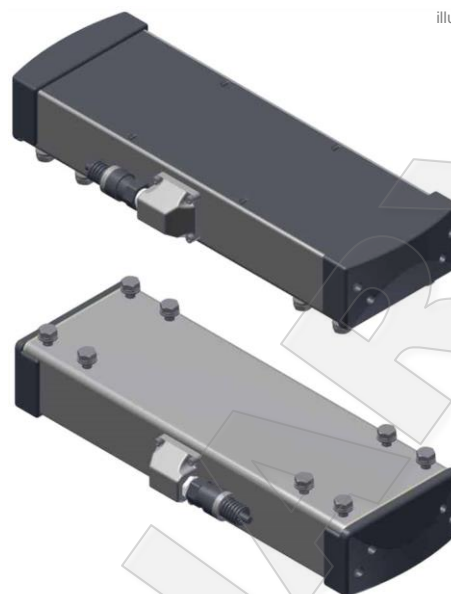
MIREL SHPA detector of rail line electromagnets is intended as a cooperating device for the mobile part of Polish SHP train protection system, to detect passing over rail line electromagnets, located in Polish rail line infrastructure. It provides for active search based on principle of electromagnetic field coupling by mutual bond of resonance circuits tuned to identical resonance frequency of 1kHz.

The scanner consists of one tuned resonance circuit and electrically separated check winding, which are put on a ferromagnetic core.

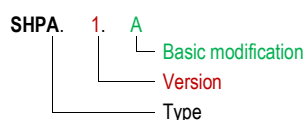
Encapsulation of inductive set is provided as an open aluminium bushing, where the aluminium mantle forms also a natural shielding from eventual interference effect of rolling stock.

SHPA detector meets requirements on fire properties pursuant STN EN 45545-2; level HL2.

illustrative picture



Nomenclature



Version

Designation	Dimension W x D x H [mm]	Weight max [kg]
1	489 x 152 x 78	11

Modification

Designation	Dimension W x D x H [mm]	Weight max [kg]
SHPA.1.A	489 x 152 x 78	11

Specification

Number	Version	Title
2298SHP	190123	Technical conditions
2197SHP	180528	SHPA Conditions of Use
2208SHP	170321	SHPA Installation terms

Usage

MIREL VZ1 – Automatic Train Protection System

MIREL SHP – Automatic Train Protection System